

**SAILING INSTRUCTIONS**  
**World Championship**  
**Vaurien class**

Organising Authority: Royal Yachtclub Sneek  
in conjunction with Vaurien Nederland,  
under auspices of the International Vaurien Class Association  
**from 23 to 30 (inclusive) July 2015**  
Kolmeersland, Offingawier (Sneek)

---

**Table of contents**

|  |          |
|--|----------|
| <b>1. RULES .....</b>                            | <b>3</b> |
| <b>2 NOTICES TO COMPETITORS.....</b>             | <b>3</b> |
| <b>3 CHANGES TO SAILING INSTRUCTIONS.....</b>    | <b>3</b> |
| <b>4. SIGNALS MADE ASHORE .....</b>              | <b>3</b> |
| <b>5 SCHEDULE OF RACES .....</b>                 | <b>3</b> |
| <b>6 CLASS FLAGS.....</b>                        | <b>4</b> |
| <b>7 RACING AREAS.....</b>                       | <b>4</b> |
| <b>8 THE COURSES.....</b>                        | <b>5</b> |
| <b>9 MARKS.....</b>                              | <b>5</b> |
| <b>10 AREAS THAT ARE OBSTRUCTIONS.....</b>       | <b>5</b> |
| <b>11 THE START .....</b>                        | <b>5</b> |
| <b>12 COURSE CHANGES .....</b>                   | <b>5</b> |
| <b>13 THE FINISH.....</b>                        | <b>6</b> |
| <b>14 PENALTY SYSTEM .....</b>                   | <b>6</b> |
| <b>15 TIME LIMITS AND TARGET TIMES.....</b>      | <b>6</b> |
| <b>16 PROTESTS AND REQUESTS FOR REDRESS.....</b> | <b>6</b> |
| <b>17 SCORING.....</b>                           | <b>7</b> |
| <b>18 [DP] SAFETY REGULATIONS .....</b>          | <b>8</b> |
| <b>19 REPLACEMENT OF CREW OR EQUIPMENT .....</b> | <b>8</b> |
| <b>20 EQUIPMENT AND MEASUREMENT CHECKS.....</b>  | <b>8</b> |
| <b>21 [NP][DP] EVENT ADVERTISING .....</b>       | <b>8</b> |
| <b>22 OFFICIAL BOATS.....</b>                    | <b>8</b> |
| <b>23 [NP][DP] SUPPORT BOATS.....</b>            | <b>8</b> |
| <b>24 [NP][DP] TRASH DISPOSAL.....</b>           | <b>9</b> |
| <b>25 [NP][DP] BERTHING.....</b>                 | <b>9</b> |
| <b>26 [NP][DP] RADIO COMMUNICATION .....</b>     | <b>9</b> |

|           |  |           |
|-----------|--|-----------|
| <b>27</b> | <b>PRIZES.....</b>   | <b>9</b>  |
| <b>28</b> | <b>DISCLAIMER OF LIABILITY .....</b>   | <b>10</b> |
| <b>29</b> | <b>INSURANCE.....</b>  | <b>10</b> |
| <b>30</b> | <b>ORGANISATION.....</b>   | <b>10</b> |
|           | <b>ADDENDUM A; Race Area .....</b>   | <b>11</b> |
|           | <b>ADDENDUM B; Courses.....</b>  | <b>12</b> |
|           | <b>ADDENDUM C; Qualifying and Final Races .....</b>                              | <b>15</b> |
|           | <b>PRESCRIPTIONS of the KNWV (Royal Netherlands Watersport Association).....</b> | <b>16</b> |

## 1. RULES

- 1.1 The regatta will be governed by the rules as defined in *The Racing Rules of Sailing* (RRS).
- 1.2 [NP]The 'Vaurien World Championship Rules 2009' will apply as modified in the Notice of Race and/or the Sailing Instructions. A breach of the Vaurien World Championship Rules 2009 will not be a ground for requesting redress, this changes RRS 62.1(a)
- 1.3 Decisions of the International Jury will be final as provided in RRS 70.5.
- 1.4 If there is a conflict between languages the English text will take precedence.
- 1.5 In all rules governing this regatta;  
(a) [DP] denotes a rule for which the penalty is at the discretion of the International Jury; and  
(b) [NP] denotes a rule that shall not be grounds for protests by a boat. This changes RRS 60.1(a).




## 2. NOTICES TO COMPETITORS

Notices to competitors will be posted on the official notice board(s) located at the regatta-office. The regatta-office is situated at the "Starteiland" (Kolmeersland).

## 3. CHANGES TO SAILING INSTRUCTIONS

Any change to the sailing instructions will be posted before 08:30 on the day it will take effect, except that any change to the schedule of races will be posted by 21:00 on the day before it will take effect.

## 4. SIGNALS MADE ASHORE

- 4.1 Signals made ashore will be displayed at the flagpole on top of the regatta-office.
- 4.2 When flag AP  is displayed ashore, '1 minute' is replaced with 'not less than 30 minutes' in the race signal AP.
- 4.3 [DP]Flag D  with one sound means 'Boats are requested not to leave the harbour when this signal is made. The warning signal will be made not less than 45 minutes after flag D is lowered'.
- 4.4 When flag Y  is displayed ashore, RRS 40 applies at all times while afloat. This changes the RRS Part 4 preamble

## 5. SCHEDULE OF RACES

- 5.1 Scheduled Races 1-6 (6 included) are races of the qualifying series in the World Championship series. SI Addendum C applies.

### 5.2 Schedule

| Date  | Activity                        | Time        |
|-------|---------------------------------|-------------|
| 23-07 | Registration                    | 09:00-18:00 |
|       | Measurement/Inspection          | 09:00-18:00 |
| 24-07 | All boats and crew at the venue | 09:00       |
|       | Skippers meeting                | 10:00-11:00 |

|       |   |              |
|-------|---|--------------|
|       | Registration  | 09:00-18:00  |
|       | Measurement/Inspection                              | 09:00-18:00  |
|       | <b>Practice Race</b>                                | <b>14:00</b> |
|       | Departure for opening ceremony                      | 18:00        |
| 25-07 | Skippers meeting                                    | 08:30-08:45  |
|       | <b>Racing (3 qualifying races)</b>                  | <b>10:00</b> |
| 26-07 | Skippers meeting                                    | 08:30-08:45  |
|       | <b>Racing (3 qualifying races)</b>                  | <b>10:00</b> |
|       | Posting of the assignments in Gold and Silver fleet |              |
| 27-07 | Skippers meeting                                    | 08:30-08:45  |
|       | <b>Racing (3 races)</b>                             | <b>10:00</b> |
| 28-07 | Reserve Day   |              |
| 29-07 | Skippers meeting                                    | 08:30-8.45   |
|       | <b>Racing (2 races)</b>                             | <b>10:00</b> |
| 30-07 | Skippers meeting                                    | 08:30-8.45   |
|       | <b>Racing (2 races)</b>                             | <b>10:00</b> |
|       | Prize giving  | 15:00        |

(For the schedule of social activities, see the program)

- 5.3** The reserve day may be used if races are not completed as scheduled or if the race committee considers it unlikely that races will be completed as scheduled. One extra race per day may be sailed, provided that the class does not become more than one race ahead of schedule. It is not the intention of the race committee to sail an extra race on the first scheduled day of racing.
- 5.4** The scheduled time of the warning signal for the practice race is 13:55. The scheduled time of the warning signal for the first race on each day is 09:55.
- 5.5** To alert boats that a race or sequence of races will begin soon, an orange flag will be displayed with one sound for at least five minutes before a warning signal is displayed.
- 5.6** On the reserve day no warning signal will be made after 14:00
- 5.7** On the last day of the event no warning signal will be made after 15:00

## **6 CLASS FLAGS**

Class flags will be:

For the qualifying races, the flags with the colours of the fleet

For the final races a yellow flag for the gold fleet and a white flag for the silver fleet

## **7 RACING AREAS**

Attachment A shows the location of racing areas.

## **8 THE COURSES**

- 8.1** The diagrams in Attachment B show the courses, including the approximate angles between legs, the order in which marks are to be passed, and the side on which each mark is to be left.
- 8.2** No later than the warning signal, the race committee signal boat will display the approximate compass bearing of the first leg.


## **9 MARKS**

- 9.1** Marks 1, 3, and 5, will be red cylindrical buoys with an arbitrary odd number. Marks 2 and 4 will be yellow cylindrical buoys with an arbitrary even number. Mark S will be an orange buoy without a number
- 9.2** The starting marks will be a race committee boat and a spar buoy.
- 9.3** The finishing marks will be a spar buoy and a race committee boat
- 9.4** A race committee boat signalling a change of a leg of the course is a mark as provided in instruction 12.2.
- 9.5** A new mark will be a green mark.

## **10 AREAS THAT ARE OBSTRUCTIONS**

The following areas are designated as obstructions: The fairway of the Prinses Margrietkanaal recognizable by the red and green buoys. During racing it is not allowed to cross or sail into this fairway! Before and after racing the fairway only may be crossed at a right angle.

## **11 THE START**

- 11.1** Races will be started by using RRS 26 with the warning signal given 5 minutes before the starting signal.
- 11.2** The starting line will be between a spar buoy with an pink flag and a staff with an pink flag on a race committee boat..
- 11.3** [DP] Boats whose warning signal has not been made shall avoid the starting area.
- 11.4** A boat starting later than 4 minutes after her starting signal will be scored Did Not Start. This changes RRS A4 and A5.
- 11.5** If flag U  has been displayed, no part of a boat's hull, crew or equipment shall be in the triangle formed by the ends of the starting line and the first mark during the last minute before her starting signal. If a boat breaks this rule and is identified, she shall be disqualified without a hearing but not if the race is restarted or resailed. This changes RRS 26. When flag U is used as the preparatory signal RRS 29.1 Individual recall does not apply. The scoring abbreviation for a flag U penalty is UFD. This changes A11 Scoring Abbreviations.

## **12 COURSE CHANGES**

- 12.1** To change the next leg of the course, the race committee will lay a new mark, move the gate, or a move the finishing line. When a new mark is laid, the original marks will be removed as soon as

practicable. When in a subsequent change a new mark is replaced, it will be replaced by an original mark.

**12.2** [DP] A buoy may be attached to the race committee starting boat anchor line just below keel depth. Boats shall not pass between this buoy and the race committee starting boat at any time. This buoy is part of the race committee starting boat ground tackle.

**12.3** Except at a gate, boats shall pass between the race committee boat signalling the change of the next leg and the nearby mark, leaving the mark to port and the race committee boat to starboard. This changes RRS 28.1.

**12.4** The courses will not be shortened. This changes RRS 32.

## **13 THE FINISH**

The finishing line will be between a staff displaying a blue flag on the race committee vessel and a nearby spar buoy with a blue flag.

## **14 PENALTY SYSTEM**

Appendix P will apply.

## **15 TIME LIMITS AND TARGET TIMES**

**15.1** Time limits are as follows:

| <i>time limit mark 1</i> | <i>time limit</i> | <i>target time</i> |
|--------------------------|-------------------|--------------------|
| <i>30 minutes</i>        | <i>90 minutes</i> | <i>60 minutes</i>  |

If no boat has passed Mark 1 within the Mark 1 time limit the race shall be abandoned.

**15.2** Failure to meet the target time will not be grounds for redress. This changes RRS 62.1(a).

**15.3** Boats failing to finish within 15 minutes after the first boat sails the course and finishes will be scored Did Not Finish without a hearing. This changes RRS 35, A4 and A5.

## **16 PROTESTS AND REQUESTS FOR REDRESS**

**16.1** Protest forms are available at the race office. Protests shall be delivered there within the protest time limit.

**16.2** For each fleet the protest time limit is 60 minutes after the last boat in that fleet has finished the last race of the day or the race committee signals no more racing today, whichever is later.

**16.3** Notices will be posted within 15 minutes of the protest time limit to inform competitors of hearings in which they are parties or named as witnesses. Hearings will be held in the jury room, located at the Regatta office.

**16.4** Notices of protests by the race committee or jury will be posted on the notice board to inform boats under RRS 61.1(b).

**16.5** A list of boats penalized by the jury under appendix P will be posted.

**16.6** Penalties for breaches of the class rules, RRS 55 or rules in the NoR and SIs marked [DP] are at the discretion of the protest committee.

- 16.7** On the last day of the regatta and after the last qualifying race a request for reopening a hearing shall be delivered
- (a) within the protest time limit if the party requesting reopening was informed of the decision on the previous day;
  - (b) no later than 30 minutes after the party requesting reopening was informed of the decision on that day.
- This changes RRS 66.
- 16.8** On the last scheduled day of racing and after the last qualifying race a request for redress from a [protest committee] [jury] decision shall be delivered no later than 30 minutes after the decision was posted. This changes RRS 62.2.
- 16.9** A request for a decision in writing has to be delivered within one hour after the decision is given verbally. This changes RRS 65.2.
- 16.10** A request for correction of an error in the published results has to be delivered within the protest time limit of the last scheduled day of racing or within 60 minutes after posting of the results, if this is later. When the request is not granted, the time limit for requesting redress is 60 minutes after the boat is informed that the request is not granted. This changes RRS 62.2.

## **17 SCORING**

- 17.1** In either the Qualifying or Final series:
- (a) when fewer than five races have been completed, a boat's series score will be the total of her race scores, or
  - (b) when five or more races have been completed, a boat's score will be the total of her race scores excluding her worst score.
- 17.2** A boat's World Championship series score will be the total of her Qualifying Series score and her Final Series Score.
- 17.3** RRS A4.2 is changed so that those scores are based on the number of boats assigned to the largest fleet in the split fleet qualification series or final series.
- 17.4** If at the end of the qualifying series some boats has more race scores than others, scores for the most recent races will be excluded so that all boats have the same number of race scores.
- 17.5** The boats competing in the Gold Fleet shall be scored higher in the regatta than boats competing in the Silver Fleet. This may not apply to a boat disqualified under RRS 5, 6 or 69.
- 17.6** For the Junior ranking, a separate series score will be made for the Junior fleet, based on the finishing places of Junior boats in the World Championship series. This changes rule 24 of the Vaurien World Championship Rules 2009
- 17.7** For the Feminine ranking, a separate series score will be made for the Feminine fleet, based on the finishing places of Feminine boats in the World Championship series. This changes rule 24 of the Vaurien World Championship Rules 2009
- 17.8** For the Masters ranking, a separate series score will be made for the Masters fleet, based on the finishing places of Master boats in the World Championship series. This changes rule 24 of the Vaurien World Championship Rules 2009

## **18 [DP] SAFETY REGULATIONS**

A boat that does not come or retires from a race shall notify the race committee as soon as possible.

## **19 REPLACEMENT OF CREW OR EQUIPMENT**

- 19.1** Substitution of crew will not be allowed without prior written approval of the race committee. The race committee will only allow a substitution of crew if the request is supported by a medical declaration from a doctor or with a standard penalty of 10 non-excludable points in the first race sailed with the new crew
- 19.2** [DP] Substitution of damaged or lost equipment will not be allowed unless approved by the equipment inspectors of the event. Requests for substitution shall be made to the measurer at the first reasonable opportunity

## **20 EQUIPMENT AND MEASUREMENT CHECKS**

[DP] A boat or equipment may be inspected at any time for compliance with the class rules and sailing instructions. When instructed by an official, a boat shall promptly proceed to the area designated for inspection.

## **21 [NP][DP] EVENT ADVERTISING**

- 21.1** Boats shall display bow numbers. The organizing authority will supply the numbers. During the equipment check the stickers will be attached to the boat by the equipment inspectors.
- 21.2** Boats shall display required event sponsor advertising. The Organizing Authority will supply the advertising. During the equipment check the stickers will be attached to the boat by the equipment inspectors

## **22 OFFICIAL BOATS**

Official boats will be marked as follows:

Race Committee: Displaying a rectangular club flag of KWS

Rescue boats: An orange flag

Equipment Inspection boats: A purple flag

Press boats: A white flag

Jury boats: A white flag with J, IJ or Jury

## **23 [NP][DP] SUPPORT BOATS**

- 23.1** All coach and support boats shall be registered with the Organizing Authority and will be required to comply with local legislation.
- 23.2** For the purposes of these sailing instructions a support boat includes any boat that is under the control or direction of a person who is providing physical, morale or advisory support to an athlete, including the gathering of data that may be used at a later time.



- 23.3** Support boats shall display their national flag or national letters at least 150mm high and clearly visible from both sides.
- 23.4** Support boats shall not interfere with boats racing or official boats, or create a wake that affects boats racing.
- 23.5** Support boats shall not be positioned:
- 23.5.1** Closer than 50 metres of any boat racing.
  - 23.5.2** Within 50 metres of the starting line and marks from the time of the preparatory signal until all boats have left the starting area, or the race committee signals a postponement, general recall or abandonment.
  - 23.5.3** Between any boat racing and the next mark of the course.
  - 23.5.4** Within 50 metres of any mark of the course while boats are in the vicinity of that mark.
  - 23.5.5** Within 50 metres of the finishing line and marks while boats are finishing.
- 23.6** In addition, support boats that are motoring above 5 knots shall remain at least 150 metres from any boat racing.
- 23.7** Support boats shall comply with any reasonable request from a regatta official.

## **24 [NP][DP] TRASH DISPOSAL**

As sailors, we seek to protect and restore our lakes. See RRS 55. Boats shall not intentionally put trash in the water. Trash may be placed aboard support and official boats.

## **25 [NP][DP] BERTHING**

Boats shall be kept in their assigned places in the boat park.

## **26 [NP][DP] RADIO COMMUNICATION**

Except in an emergency, a boat that is racing shall not make voice or data transmissions and shall not receive voice or data communication that is not available to all boats.

## **27 PRIZES**

The crew on board (helmsmen and crew) of the winning boat of the championship acquires the title "World Champion Vaurien Class 2015". Four races are required to be completed to award the title and the prize for the World Champion.

Other prizes will be given as follows:

- Prizes will be awarded to the top 3 boats of the World Championship series
- Prizes for the top 3 junior boats (crew on board born after 31 December 1996) in the Junior ranking
- Prizes for the top 3 female boats (crew on board shall be female) in the Feminine ranking
- Prizes for the top 3 master boats (the helmsmen responsible person is born before 1 January 1975, the sum of the ages of the crew on board on 1 January 2015 shall not be less than 65 years, crew should not be less than 19 year old before 1 January 2015) in the Masters ranking

- A prizes for the best wooden Vaurien in the World Championship series
- The Mieke Pannevis Cup for the women competitor with the highest ranking in de World Championship series.
- The CUP CIV for the nation, with at least two boats competing in the World Championship series, and the last boat of that nation is in front of all other last boats of nations with at least two boats competing.

## **28 DISCLAIMER OF LIABILITY**

Competitors participate in the regatta entirely at their own risk. See RRS 4, Decision to Race. The organizing authority will not accept any liability for material damage or personal injury or death sustained in conjunction with or prior to, during, or after the regatta.

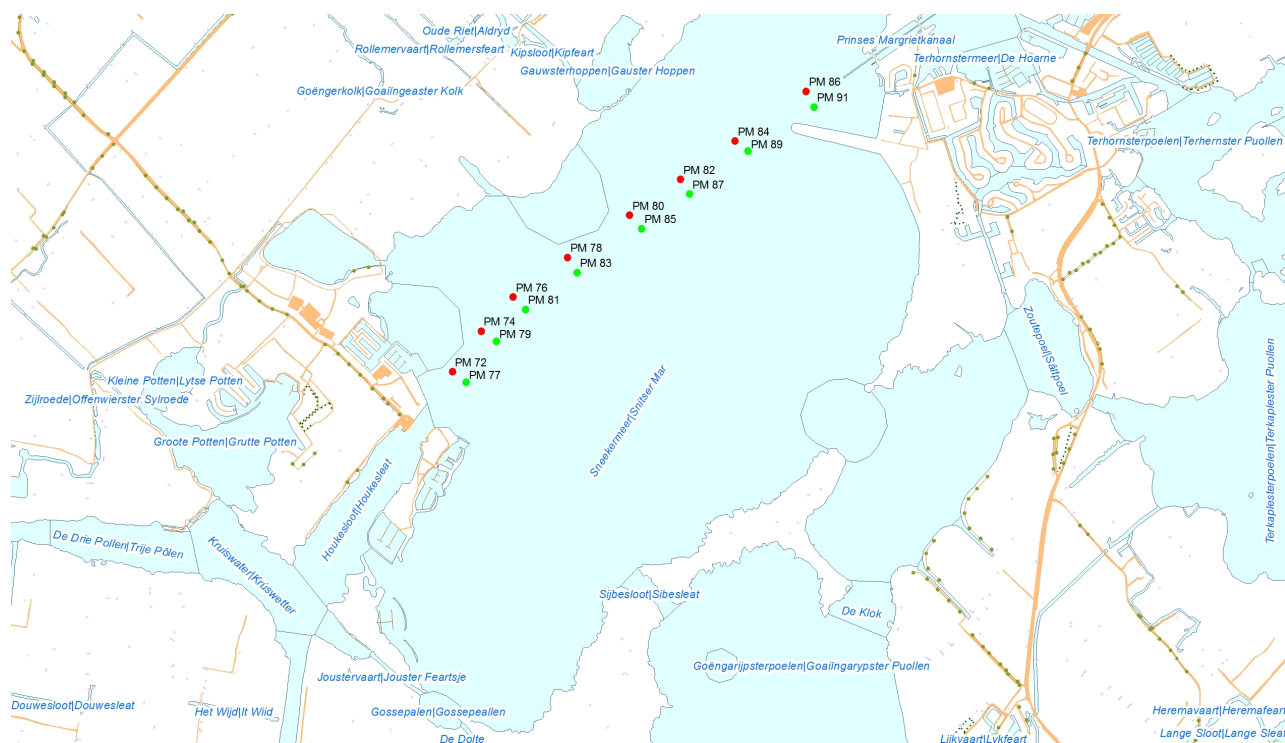
## **29 INSURANCE**

Each participating boat shall be insured with valid third-party liability insurance with a minimum cover of Euro 1.500.000 per event or the equivalent.

## **30 ORGANISATION**

The race officer is: Mr Piet van der Zwaag  
The chairman of the jury is: Mr John Doerr  
The measurer of the event is: Mr Uggo Zappi

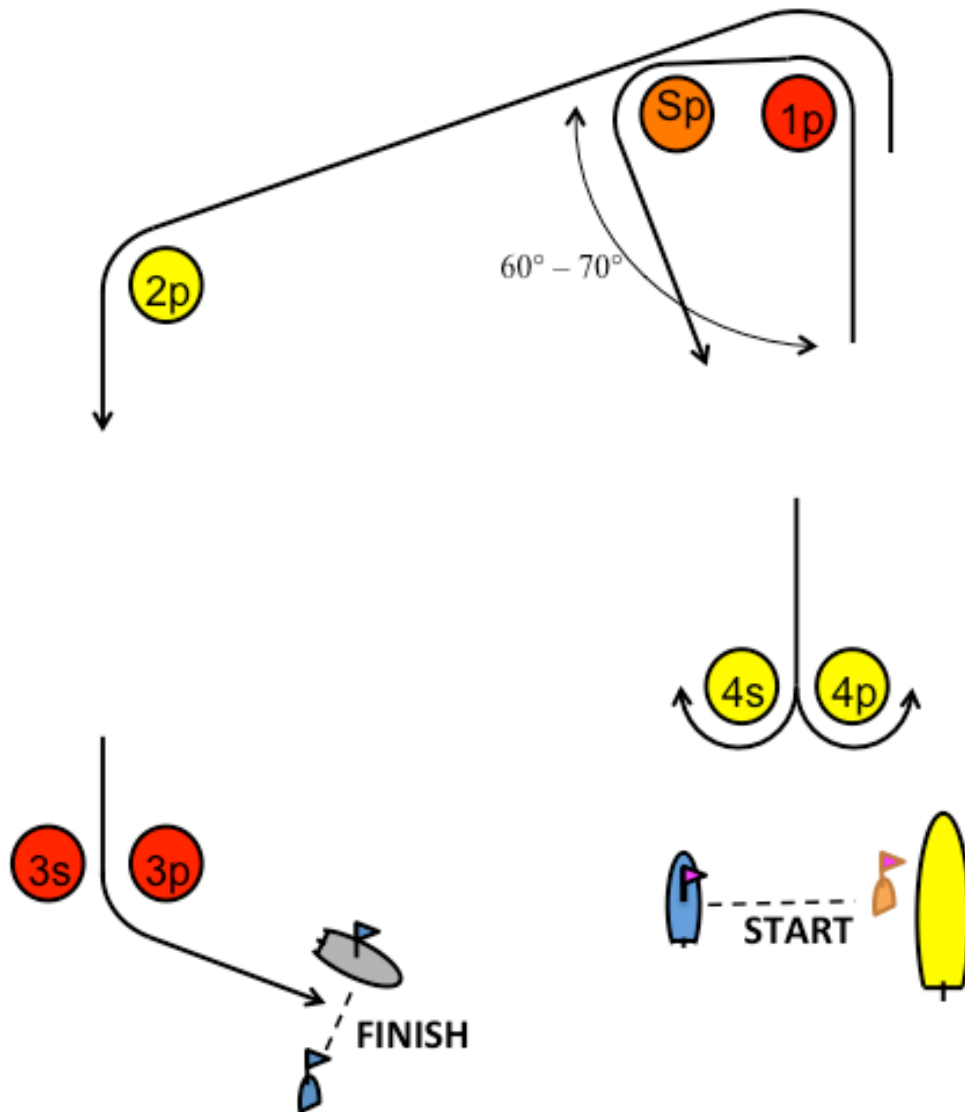
## ADDENDUM A; Race Area



## ADDENDUM B; Courses

No later than the warning signal, the course to be sailed will be signalled on the Race Committee Boat at the starting line by a yellow board with a Letter and a white board with a number

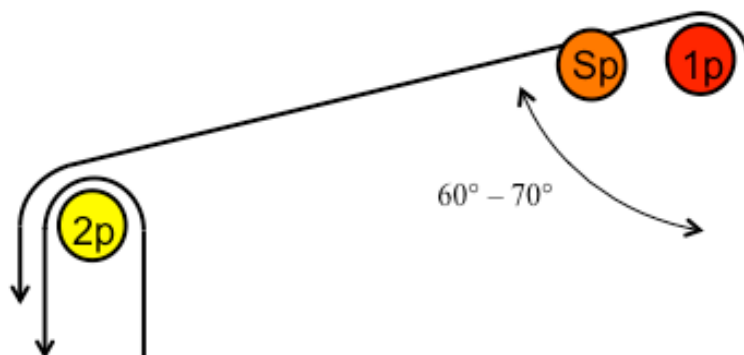
# J



| Course Inner Loop |   |
|-------------------|---|
| Signal            | Mark Rounding Order   |
| J2                | START – 1p - Sp - 4Gate- 1p – 2p – 3p - FINISH                          |
| J3                | START – 1p – Sp - 4Gate- 1p – 4Gate – 1p – 2p – 3p - FINISH             |
| J4                | START – 1p – SP - 4Gate – 1p – 4Gate- 1p -4Gate – 1p – 2p – 3p - FINISH |

p: leave on port  
s: leave on starboard  
S: Spreader mark

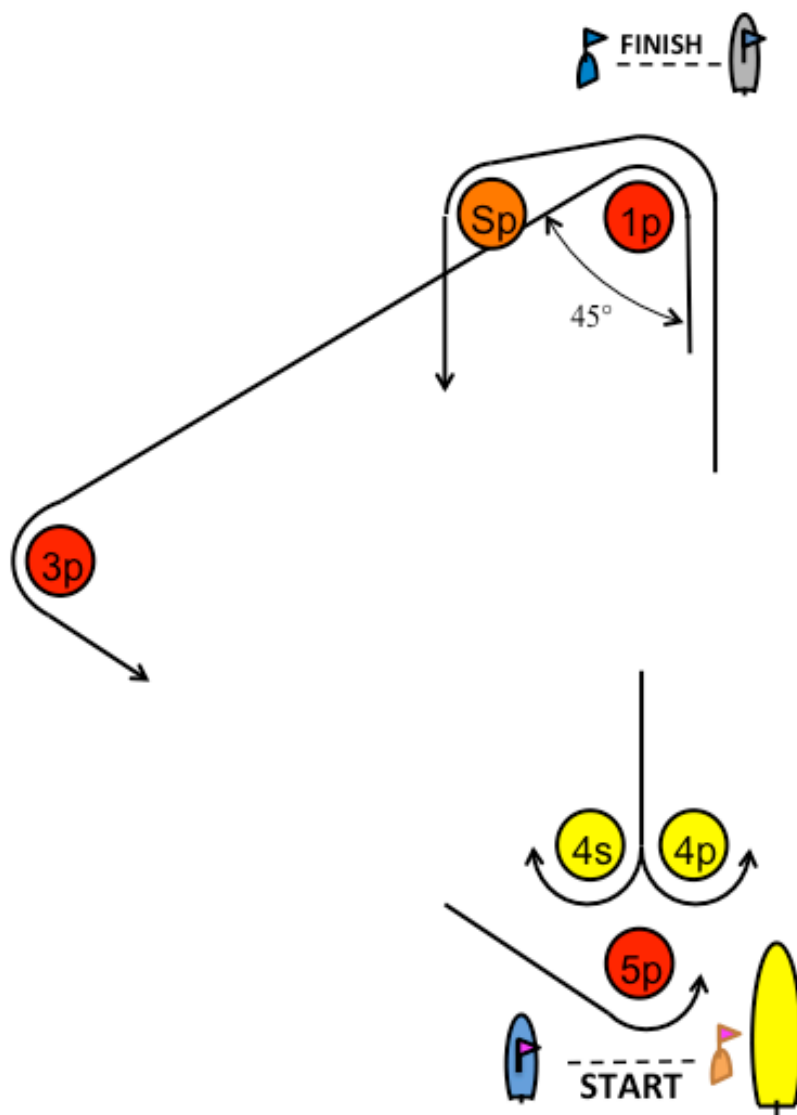
**O**



| Course Outer Loop |  |
|-------------------|--|
| Signal            | Mark Rounding Order  |
| O2                | START – 1p – 2p – 3Gate – 2p – 3P - FINISH                           |
| O3                | START – 1p – 2p – 3Gate – 2p – 3Gate – 2p – 3p - FINISH              |
| O4                | START – 1p – 2p – 3Gate – 2p – 3Gate – 2p – 3Gate – 2p – 3p - FINISH |

p: leave on port  
s: leave on starboard  
S: Spreader mark

# I



| Course Triangle |  |
|-----------------|--|
| Signal          | Mark Rounding Order  |
| T3              | START – 1p - Sp – 4Gate – 1p - 3p – 5p - FINISH              |
| T4              | START – 1p - Sp – 4Gate – 1p – 3p – 5p – 1p – 4Gate - FINISH |

p: leave on port  
s: leave on starboard  
S: Spreader mark

## ADDENDUM C; Qualifying and Final Races

- C1. The event is split into fleets. The World Championship series will be divided into a Qualifying series and a Final series.
- C2. In the Qualifying (Final) series the start of the White (Silver) fleet will be as soon as practical after a valid start of the Yellow (Gold) fleet.
- C3. Qualifying Series**
- C3.1. Boats will be assigned to the Yellow fleet and the White fleet as nearly as possible, equal size and ability. A seeding committee appointed by the race committee will make initial assignments, based on the results of the World Championship Vaurien 2014. These assignments will be posted by 21:00 on the day before the first scheduled race.
- C3.2. Boats will be reassigned to fleets after each day of racing, except if on the first day all fleets complete fewer than two races. If all fleets have completed the same number of races, boats will be reassigned on the basis of their ranks in the series. If all fleets have not completed the same number of races, the series scores for reassignment will be calculated for those races, numbered in order of completion, completed by all fleets. Reassignments will be made as follows:
- | Rank in series | Fleet assignment |
|----------------|------------------|
| First          | Yellow           |
| Second         | White            |
| Third          | White            |
| Fourth         | Yellow           |
| Fifth          | Yellow           |
| Sixth          | White            |
| Seventh        | White            |
| Eight          | Yellow           |
- and so on
- If two or more boats have the same rank, they will be entered in the left column in order of fleets in SI C.3.2
- C3.3. Assignments will be based on the ranking available at 20:00 that day regardless of protests or requests for redress not yet decided.
- C3.4. If all fleets have not completed the same number of races by the end of a day, the fleets with fewer races will continue racing the following day until all fleets have completed the same number of races. All boats will thereafter race in the new fleets.
- C3.5. As long as for both fleets five qualifying races are completed on June 26, 2015, the assignment to Gold and Silver fleet will be posted on the notice board. If on that day only four or less qualifying races are completed by a fleet, the races on the next day are also qualifying races until all fleets have completed 5 qualifying races on that day. After June 27, 2015 there will be no more qualifying races.
- C4. Final Series**
- C.4.1 Boats will be assigned to the Gold or Silver fleets on the basis of their ranks in the Qualifying series as nearly equally as possible. The Silver fleet will not be larger than the Gold fleet.
- C4.2 Any recalculation of final series ranking after boats have been started the first race in the final series will not affect the assignments except that a redress decision may promote a boat to the Gold fleet.
- C6.5 [NP][DP] While racing in the qualifying series boats shall conspicuously display a ribbon of the colour of their fleet in the top of the mast. Boats in the silver fleet shall conspicuously display a white ribbon in the top of the mast. Boats in the gold fleet shall not display a ribbon. Ribbons are available at the Regatta Office.

## **PRESCRIPTIONS of the KNWV (Royal Netherlands Watersport Association)**

### **Rule 6**

The Dutch Doping Regulations of the RNWA applies for all events under the responsibility of the RNWA.

### **Rule 46**

A responsible person who has his domicile in the Netherlands shall have a valid racing license or event license, issued by or in name of the RNWA. The Race Committee shall verify if this requirement is fulfilled. If this requirement is not fulfilled the Race Committee shall reject or cancel the entry of the boat in accordance with RRS 76.1 or the Race committee shall protest the boat.

### **Rule 47**

With exception of the responsible person every other person on board, who has his domicile in the Netherlands, shall have a valid crew license, event crew license, racing license or event license, issued by or in name of the RNWA. If this requirement is not fulfilled the entry of the boat shall be rejected or cancelled in accordance with RRS 76.1 or the Race committee shall protest the boat.

### **Rule 67**

#### **Damages**

- a. Every issue of liability or claim for damages arising from an incident while a boat is bound by *The Racing Rules of Sailing* shall be subject to the jurisdiction of the court and not considered by a protest committee.
- b. A boat that takes a penalty or retires does not thereby admit liability for damages or that he has broken a rule.
- c. A goal of the *rules* is avoiding contact. By participating in an event under the *rules* a boat accepts that the responsibility for damages occurred by breaking a rule will be based on guilt caused by applying the rules and not on accepting the risks.

### **Rule 70.5**

Approval of the RNWA is required for denying the right of appeal if this is necessary for reasons stated in RRS 70.5(a).

The approval shall be posted on the official notice board of the event.

### **Rule 78.1**

Every boat (excluding boards), competing in races in a national or international recognized class, and owned by a person, who has his domicile in the Netherlands, shall have a valid certificate, issued by the RNWA. The Race Committee shall verify that a participating boat has a valid certificate, according to the class rules or this prescription.

If a boat does not fulfil this requirement, with exception of what is mentioned in RRS 78.2, his entry shall be rejected or cancelled according to RRS 76.1, or the Race Committee shall protest the boat.

### **Rule 78.3**

The in RRS 78.3 mentioned measurer shall be:

- an International Measurer recognized by ISAF, or,
- a measurer appointed by ISAF, or,
- an official measurer in accordance with the Equipment Rules of Sailing, or,
- an equipment inspector in accordance with the 'Reglement voor klassencontroleurs'.

and must be able to prove that.

The Race Committee shall help this measurer or equipment inspector by prescribing that the boats, which are called for inspection, have to report without delay at a designated place.

When no measurer is appointed, the RNWA may appoint a equipment inspector or measurer, under RRS 78.3, for an event under his responsibility. In that case the appointed measurer shall show the appointment by the RNWA in writing to the Race Committee. This written appointment shall be posted at the official notice board of the event.

### **Rule 88.2**

It is not permitted that Sailing Instructions contain changes to the Prescriptions of the RNWA or prescribe that they do not apply, without prior written permission of the RNWA



**Rule 86.3**

An organizing authority wishing to develop and test a rule change during an event shall obtain prior approval in writing from the RNWA. This approval shall be mentioned in the Notice of Race and posted at the official notice board. The organizing authority shall promptly report the results of the test to the RNWA.

**Rule G1**

Unless prescribed otherwise in the class rules, the RRS G1.1(a), G1.1(c), G1.2 and G1.3 (as far as applicable) also apply for the by the RNWA recognized national classes.