

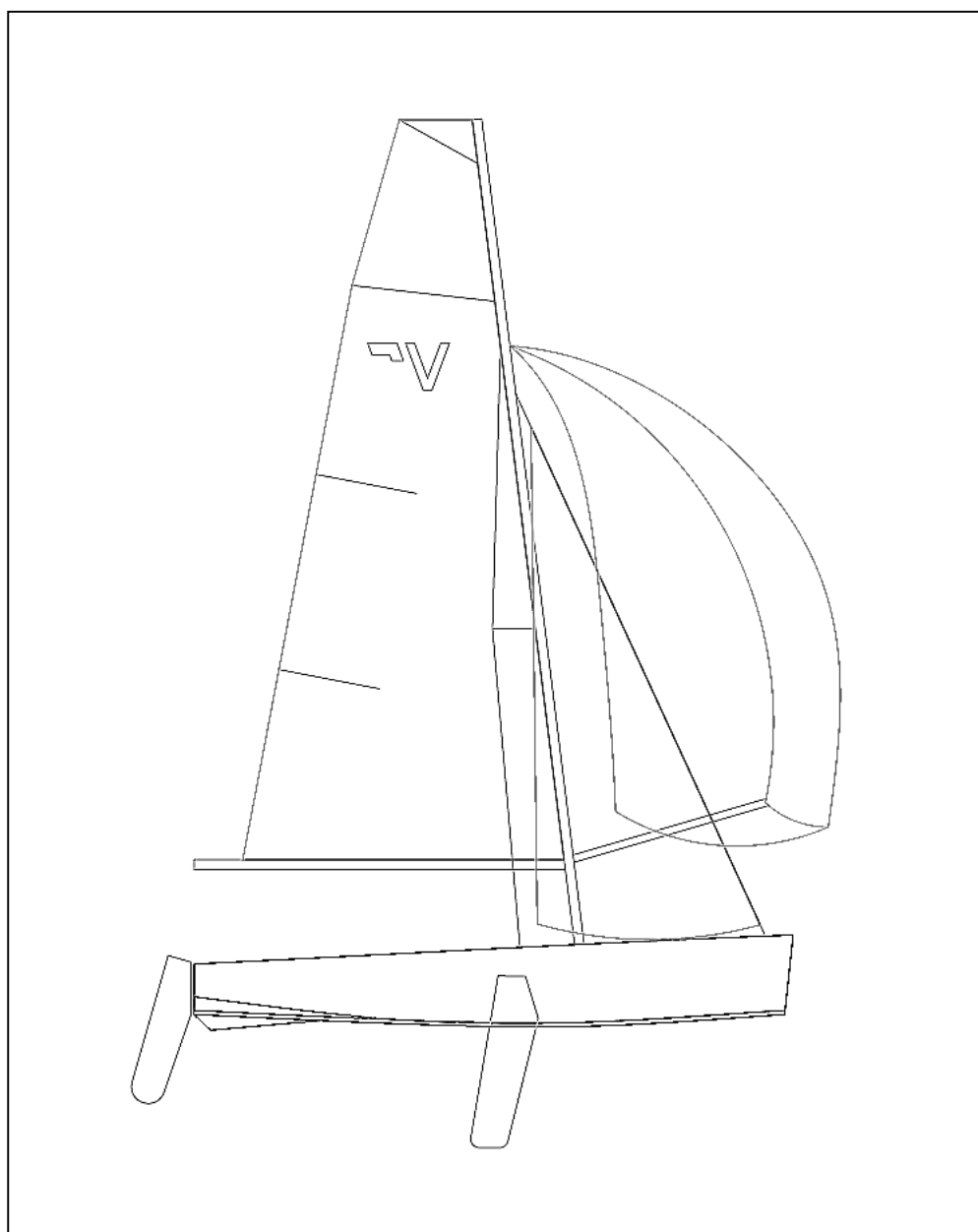
**INTERNATIONAL**

**VAURIEN**

**CLASS RULES**

**SAILS RULES AMENDMENT FOR WC**

**2008**



## Section A – Sails - Use

### A.1.1 MODIFICATIONS, MAINTENANCE AND REPAIR

- (a) **Sails** shall not be altered in any way except as permitted by these **rules**.
- (b) Routine maintenance such as mending is permitted without re-measurement and re-**certification**.

### A.1.2 LIMITATIONS

- (a) Not more than one mainsail, one foresail and one spinnaker shall be used during an event, except when a sail has been lost or damaged beyond repair. Such replacement shall be made only with the approval of the Race Committee.

### A.1.3 DIMENSIONS

See Section B.

### A.1.4 MAINSAIL

#### (a) IDENTIFICATION

The national letters and sail numbers shall comply with the RRS.

#### (b) USE

- (1) The **sail** shall be hoisted on a halyard. The arrangement shall permit hoisting and lowering of the **sail** at sea.
- (2) The highest visible point of the **sail**, projected at 90° to the mast **spar**, shall not be set above the lower edge of the mast **upper limit mark** (band n° 3). The intersection of the **leech** and the top of the boom **spar**, each extended as necessary, shall not be behind the fore side of the boom **outer limit mark**.
- (3) **Luff** and **foot** bolt ropes and slides shall be in the **spar** grooves or tracks.
- (4) Battens shall be fitted into their respective batten pockets when sailing, except in the case of accidental loss or damage.

### A.1.5 FORESAIL

#### (a) USE

- (1) The foresail shall be hoisted with the foresail halyard. The arrangement shall permit the hoisting and lowering of the **sail** at sea.

### A.1.6 SPINNAKER

#### (a) IDENTIFICATION

The sail numbers shall comply with the RRS except otherwise stated in these rules

#### (b) USE

- 1) The spinnaker shall be hoisted on the spinnaker halyard. The arrangement shall permit the hoisting and lowering of the sail at sea.

## Section B – Sails – Measurement

### B.1 PARTS

#### B.1.1 MANDATORY

- (a) Mainsail
- (b) Headsail

#### B.1.2 OPTIONAL

- (a) Spinnaker

### B.2 GENERAL

#### B.2.1 RULES

- (a) **Sails** shall comply with the **class rules** in force at the time of **certification** ("grandfather rule").

#### B.2.2 CERTIFICATION

- (a) The **official measurer** shall **certify** mainsails and headsails in the **tack** and spinnakers in the **head** and shall sign and date the **certification mark**.

#### B.2.3 SAILMAKER

- (a) No licence is required.
- (b) The date of manufacture and the type and weight of cloth shall be indelibly marked near the **head point** by the sailmaker together with his signature or stamp.

### B.3 MAINSAIL

#### B.3.1 IDENTIFICATION

- (a) The class emblem shall conform to the dimensions and requirements as detailed in the diagram hereunder and be placed in accordance with the following provisions.

- (1) The Vaurien class logo shall be shown on both sides of the main sail.
- (2) The Vaurien class logo shall conform to the diagram B.3.1.1 in shape. The size shown is the standard size. The corners may be rounded off.
- (3) The logos shall be placed back to back with the "flag" pointing to the leech, a "mirrored" version being placed on the back side. The logo shall be placed in close vicinity of the upper intermediate batten pocket with a maximum distance to the batten pocket of not more than 100mm. The orientation shall be approximately parallel to the batten pocket.

- (b) Letters and numbers shall comply with ERS.

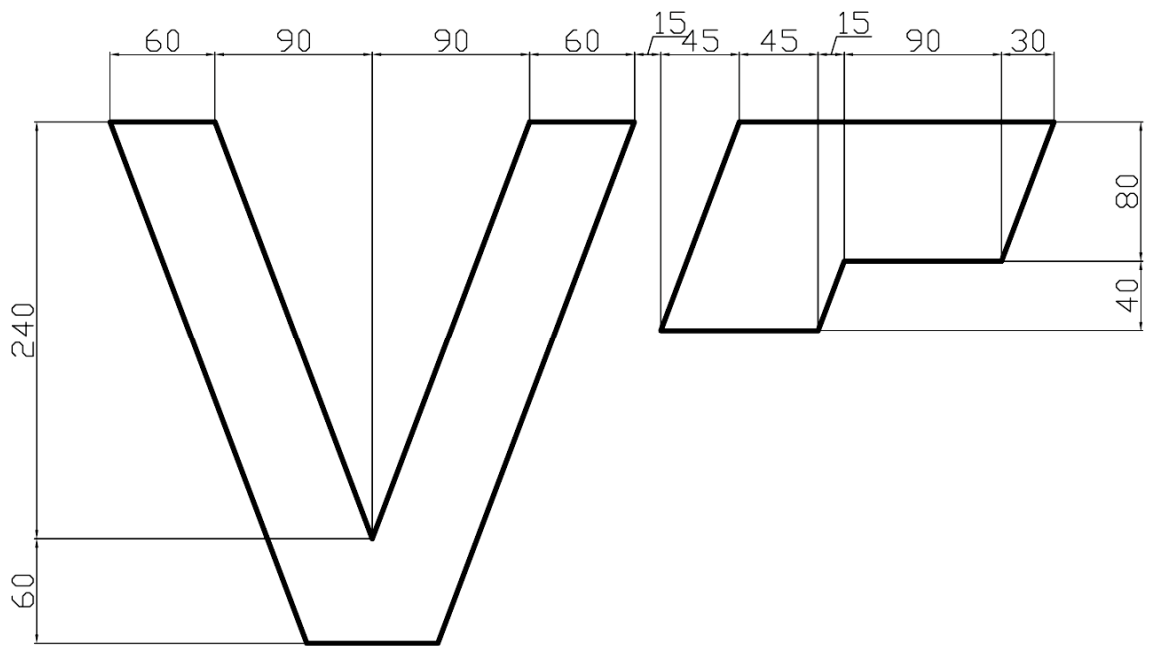


Diagram B.3.1.1

### B.3.2 MATERIALS

- The **ply** fibres shall consist of any material except aramid compounds
- Headboard **stiffening** : type, material and shape are optional.
- Sail reinforcement shall consist of **single ply woven layers**.
- Battens : type, material and shape are optional.
- The boltrope shall be of synthetic fibre and not be shockcord.

### B.3.3 CONSTRUCTION

- The construction shall be: **soft sail, single ply sail**. There are no limitations for the system of construction except for the three-dimensional moulding.
- The **body of the sail** shall consist of the same **woven ply** throughout.
- The **sail** shall have a maximum of four (4) batten **pockets** in the **leech**.
- The following are permitted: Stitching, glues, tapes, bolt ropes, three corner eyes, headboard with fixings, Cunningham eye or attachment, Cunningham rope, **batten pocket patches**, batten pocket elastic, batten pocket end caps, mast and boom slides, one **window**, tell tales, sail shape indicator stripes, tensioning devices at leech end of the two upper battens and items as permitted or prescribed by other applicable *rules*.
- The total number of panels and their shape and orientation are optional
- The **leech** shall not extend aft of straight lines between:

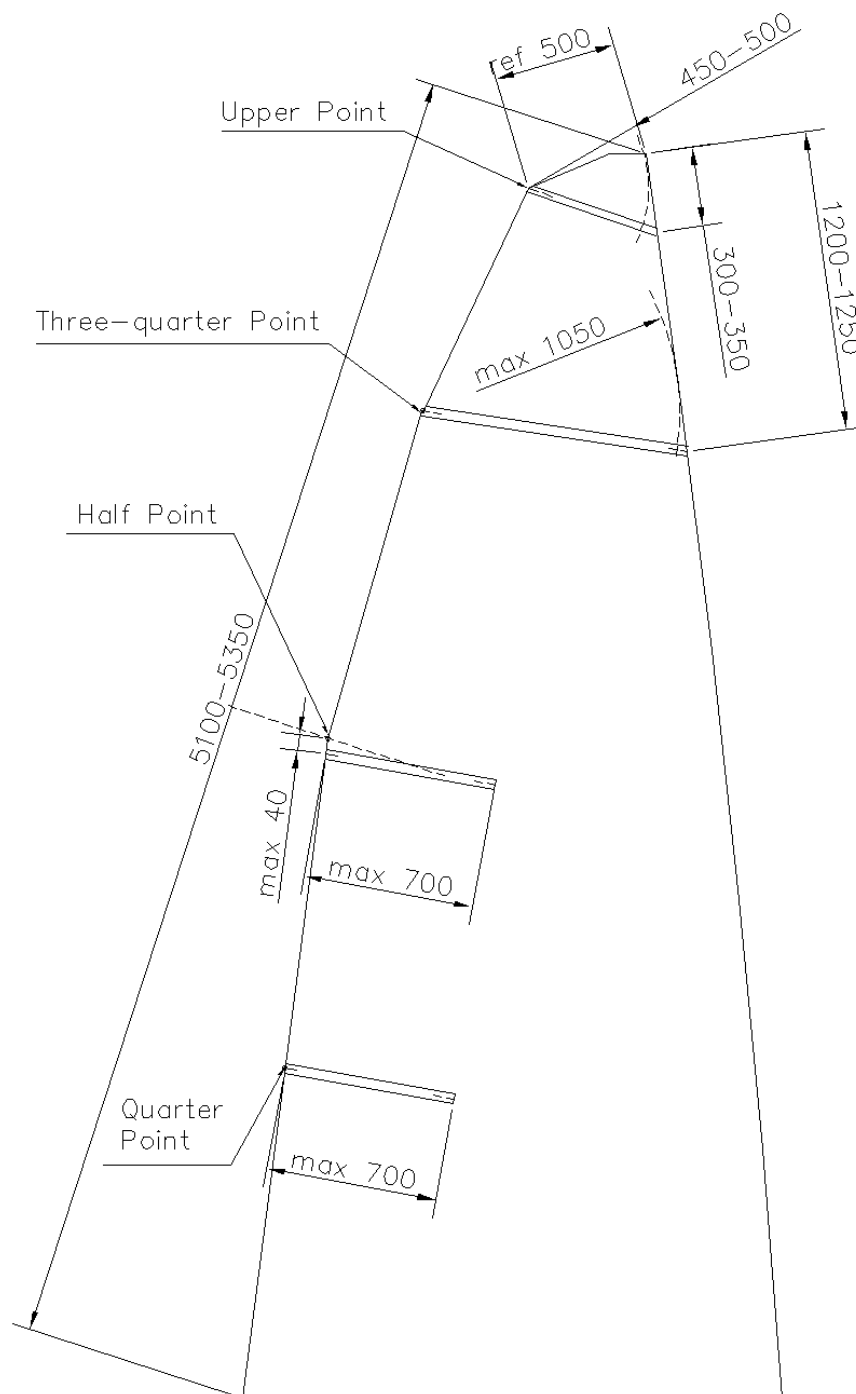
- (1) the **aft head point** and the intersection of the **leech** and the upper edge of the nearest **batten pocket**,
- (2) the intersection of the **leech** and the lower edge of a **batten pocket** and the intersection of the **leech** and the upper edge of an adjacent **batten pocket** below,
- (3) the **clew point** and the intersection of the **leech** and the lower edge of the nearest **batten pocket**.

(g) The **leech** shall be edged by a **folded tabling** or a **taped edge**.

#### B.3.4 DIMENSIONS

	minimum	maximum
(1) <b>Leech length</b> .....	5100mm	5350mm
(2) <b>Three-quarter width</b> .....		1050mm
(3) <b>Upper width at upper leech point</b> 500mm from <b>head point</b> .....	450mm	500mm
(4) <b>Foot length</b> .....		2200mm
(5) <b>Weight of ply</b> of the body of the <b>sail</b> .....		optional
<b>Reinforcements :</b>		
(6) Primary .....		305mm
(7) Secondary .....		915mm
(8) Flutter patch .....		120mm
(9) Chafing patch .....		300mm
(10) Batten pocket patch .....		175mm
(11) <b>Tabling width</b> .....		30mm
(12) Distance from <b>clew point</b> to <b>foot bolt rope</b> .....		300mm
(13) Distance from <b>tack point</b> to <b>foot bolt rope</b> .....		300mm
(14) Diameter of <b>boltrape</b> .....		7mm
(15) <b>Seam width</b> .....		30mm
(16) <b>Window area</b> .....		0,15m <sup>2</sup>
(17) <b>Window to sail edge</b> .....	150mm	
(18) Extension of headboard from <b>head point</b> .....		150mm
(19) Outside <b>batten pocket</b> length :		
lower intermediate and lowermost pockets .....		700mm
(20) Outside <b>batten pocket</b> width .....		40mm
(21) <b>Head point</b> to intersection of <b>leech</b> and centreline of uppermost <b>batten pocket</b> .....	450mm	500mm
(22) <b>Head point</b> to intersection of luff and centreline of uppermost batten pocket .....		300mm
(23) <b>Head point</b> to intersection of leech and centreline of upper intermediate batten pocket .....		optional
(24) <b>Head point</b> to intersection of leech and centreline of lower intermediate batten pocket .....		optional
(25) <b>Clew point</b> to intersection of leech and centreline of lowermost batten pocket .....		1300mm
(26) <b>Head point</b> to intersection of luff and centreline of uppermost batten pocket .....	300mm	350mm

- (27) Head point to intersection of luff and centreline  
of upper intermediate batten pocket .....1200mm.... 1250mm
- (28) Distance from the intersection of the centrelines  
of the three lowest batten pockets and leech to  
adjacent cross width measurement point..... 40mm



## B.4 HEADSAIL

### B.4.1 MATERIALS

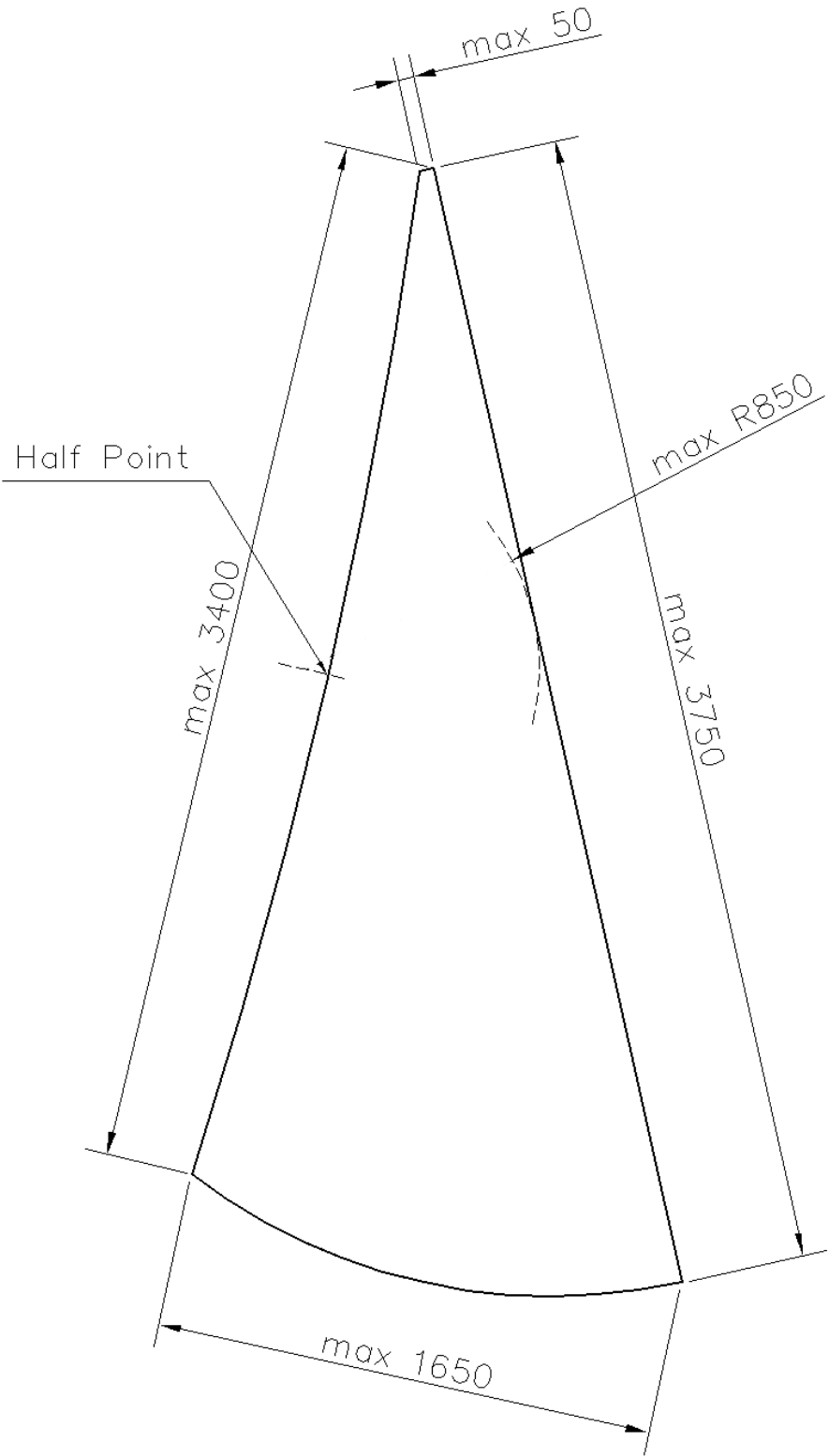
- (a) The **ply** fibres shall consist of any material except aramid compounds.
- (b) **Stiffening** shall consist of single ply layers
- (c) **Sail reinforcement** shall consist of single ply layers.
- (d) The **luff bolt rope** shall be of flexible wire rope of stainless steel.

### B.4.2 CONSTRUCTION

- (a) The construction shall be: **soft sail, single ply woven sail**. There are no limitations for the system of construction except for the three-dimensional moulding.
- (b) The **body of the sail** shall consist of the same **woven ply** throughout.
- (c) The following are permitted : stitching, glues, tapes, corner eyes, hanks, tell tales, flutter patches, one **window**, sail shape indicator stripes and items as permitted or prescribed by other applicable *rules*.
- (d) The **leech** shall not extend beyond a straight line from the aft **head point** to the **clew point**.
- (e) The total number of panels and their shape and orientation are optional.
- (f) The **leech** and the **foot** shall be edged by a **folded tabling** or a **taped edge**

### B.4.3 DIMENSIONS

	minimum	maximum
(1) <b>Luff length</b> .....		3750mm
(2) <b>Leech length</b> .....		3400mm
(3) <b>Foot length</b> .....		1650mm
(4) <b>Half width</b> .....		850mm
(5) <b>Top width</b> .....		50mm
(6) <b>Foot irregularity</b> .....		10mm
(7) Weight of <b>ply</b> of the <b>body of the sail</b> .....		optional
<b>Reinforcements</b>		
(8) Primary .....		260mm
(9) Secondary .....		780mm
(10) Chafing patch .....		300mm
(11) <b>Window</b> area .....		0,15 m <sup>2</sup>
(12) <b>Window to sail edge</b> .....	150 mm	
(13) <b>Bolt rope diameter (stainless steel)</b> .....	2,5mm	
(14) <b>Tabling width</b> .....		30mm
(15) <b>Seam width</b> .....		30mm



## B.6 SPINNAKER

### B.6.1 MATERIALS

- (a) The **ply** fibres shall consist of any material except aramid compounds.
- (b) **Sail reinforcement** shall consist of single ply layers.

### B.6.2 CONSTRUCTION

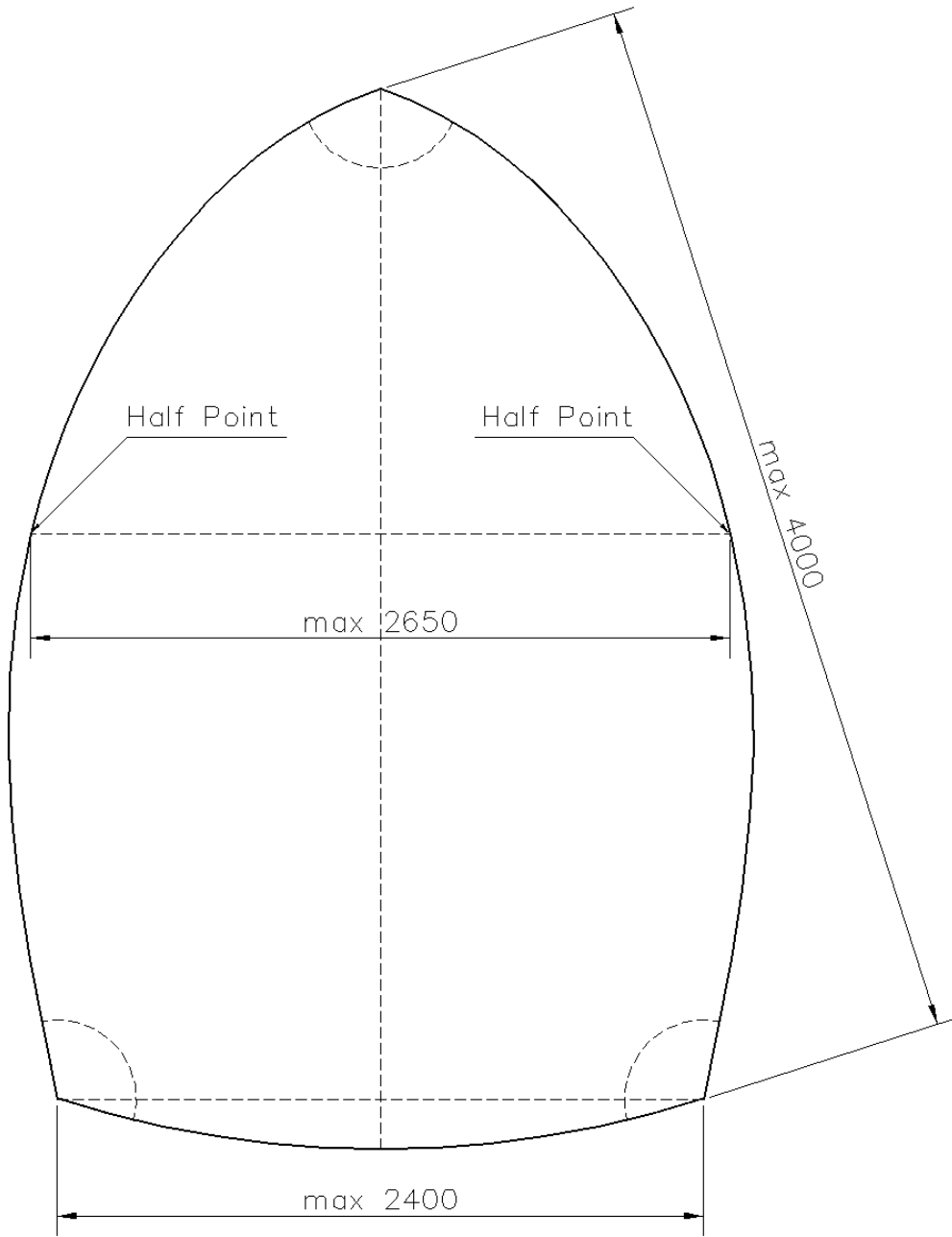
- (a) The construction shall be: **soft sail, single ply sail**. There are no limitations for the system of construction except for the three-dimensional moulding.
- (b) The **body of the sail** shall consist of the same **woven ply** throughout.
- (c) The following are permitted: Stitching, glues, tapes, corner eyes, recovery line eyes, tell tales and items as permitted or prescribed by other applicable *rules*.
- (d) The total number of panels and their shape and orientation are optional
- (e) The **leeches** and the **foot** shall be edged by a **folded tabling** or a **taped edge**

### B.6.3 DIMENSIONS

	minimum	maximum
(1) <b>Leech length</b> .....		4000mm
(2) <b>Foot length</b> .....		2400mm
(3) <b>Upper width at upper leech points</b> .....		30mm
(4) <b>Half width</b> .....		2650mm
(5) Weight of <b>ply</b> of the <b>body of the sail</b> .....		optional
<b>Reinforcements</b>		
(6) Primary .....		260mm
(7) Secondary .....		780 mm
(8) <b>Tabling width</b> .....		30mm
(9) <b>Seam width</b> .....		30mm

### B.6.4 IDENTIFICATION

- (a) The national letters and sail numbers shall comply with the RRS but may be applied on one side only of the spinnaker



## Section C – Spars - Spinnaker Pole

### C.5 SPINNAKER POLE

#### C.5.1 MANUFACTURER

- (a) No licence is required

#### C.5.2 MATERIALS

- (a) The **pole spar** shall be of aluminium alloy

#### C.5.3 FITTINGS

- (a) End hooks for the sheets  
 (b) Mid length fairleads for spinnaker boom lift and down haul  
 (c) A fixed line between the fittings described in C.5.3 (a) which may incorporate knots, toggles or short tubes for easier handling.

#### C.5.4 DIMENSIONS

	minimum	maximum
<b>Spinnaker pole cross section</b> at mid length .....	25mm	.....
<b>Spinnaker pole length</b> (including hooks).....	... ..	1750mm

Effective : 1 May 2008